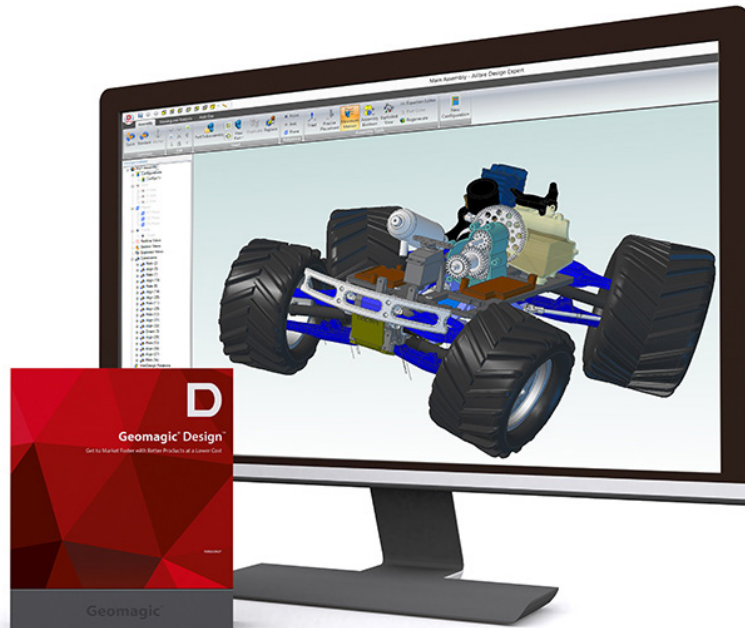




# Geomagic<sup>®</sup> Design<sup>™</sup>

Driving CAD Engineering Forward



## Release Notes

# TABLE OF CONTENTS

<b>1</b>	<b>INTRODUCTION</b> .....	<b>1</b>
	<b>COPYRIGHT</b> .....	<b>1</b>
<b>2</b>	<b>INSTALLATION</b> .....	<b>2</b>
	<b>SYSTEM REQUIREMENTS</b> .....	<b>2</b>
	<b>DOWNLOAD AND INSTALL SOFTWARE</b> .....	<b>2</b>
	<b>UPGRADING TO GEOMAGIC DESIGN</b> .....	<b>2</b>
	<b>ACTIVATE LICENSE</b> .....	<b>2</b>
<b>3</b>	<b>NEW FEATURES AND ENHANCEMENTS</b> .....	<b>3</b>
	<b>PART WORKSPACES</b> .....	<b>3</b>
	Global Parameters.....	3
	Cursor Color.....	3
	Importing CAD Formats.....	3
	<b>ASSEMBLY WORKSPACES</b> .....	<b>4</b>
	Assembly Features.....	4
	Mirroring in Assembly.....	4
	<b>DRAWINGS</b> .....	<b>4</b>
	Importing and Exporting DWG/DXF.....	4
	<b>LIVE LINKING OF MODEL TO KEYSHOT FOR 3D SYSTEMS</b> .....	<b>5</b>
	Transferring Models to KeyShot for 3D Systems.....	5
	<b>API ENHANCEMENTS</b> .....	<b>5</b>
	Sweep.....	5
	<b>PDF PUBLISHING</b> .....	<b>5</b>
	Publishing 2D Drawings.....	5
<b>4</b>	<b>FIXED BUGS</b> .....	<b>6</b>

# 1 INTRODUCTION

Thank you for purchasing the Geomagic Design. Geomagic Design is a easy to use program to get ideas to production quickly and efficiently.

## **COPYRIGHT**

©1993-2015. 3D Systems, Inc. All rights reserved. The content of this manual is furnished for informational use only, is subject to change without notice, and should not be construed as a commitment by 3D Systems, Inc. Any names, places, and/or events in this publication are not intended to correspond or relate in any way to individuals, groups or associations. Any similarity or likeness of the names, places, and/or events in this publication to those of any individual, living or dead, place, event, or that of any group or association is purely coincidental and unintentional.

### SYSTEM REQUIREMENTS

For the latest system requirements information and to learn about specific qualified system configurations, go to the [System Requirements](#) page in the Geomagic Support Center. Some users have had success running system configurations that deviate from the supported listed on our website. In such cases, these configurations are not officially supported by 3D Systems, Inc.

### DOWNLOAD AND INSTALL SOFTWARE

You can download and install the software from [gettingstarted.geomagic.com](#), select the Geomagic Design product, then select to download Geomagic Design.

In addition, you can check if software updates are available by going to [Help > Check for updates](#) in the Home window. If a valid maintenance code is activated and your computer is connected to the Internet, the application will check if a newer version is available and will download it automatically for installation.

### UPGRADING TO GEOMAGIC DESIGN

The table below shows the current availability of 32bit and 64bit add-ons when upgrading to Geomagic Design.

Add-on	64-Bit	Website
Geomagic Design Part Library	Web Interface Only	
Geomagic Design Vault	Available	<a href="http://www.m-files.com">www.m-files.com</a>
Dynamics for Geomagic Design	Available	<a href="http://support.geomagic.com">support.geomagic.com</a>
Simulate for Geomagic Design	Available	<a href="http://support.geomagic.com">support.geomagic.com</a>

**Note:** None of the addons listed above are included with your Geomagic Design licenses, unless otherwise stated at time of original purchase.

**Recommended CAM system:** [GibbsCAM 2015](#).

### ACTIVATE LICENSE

Geomagic Design requires license activation to run the application on your PC. You can choose to use an evaluation license for a 15-day period or activate a permanent license by using a virtual or physical dongle.

After you start your application, the License Utility window opens. The License Utility allows you to activate and use the Geomagic Design software.

**NOTE:** When you launch the License Utility, you can click the Help button to read the Licensing Guide.

You should have received an email from 3D Systems with your activation code. If you have not received an email from 3D systems, contact them at [Geomagic.Support.Americas@3DSystems.com](mailto:Geomagic.Support.Americas@3DSystems.com).

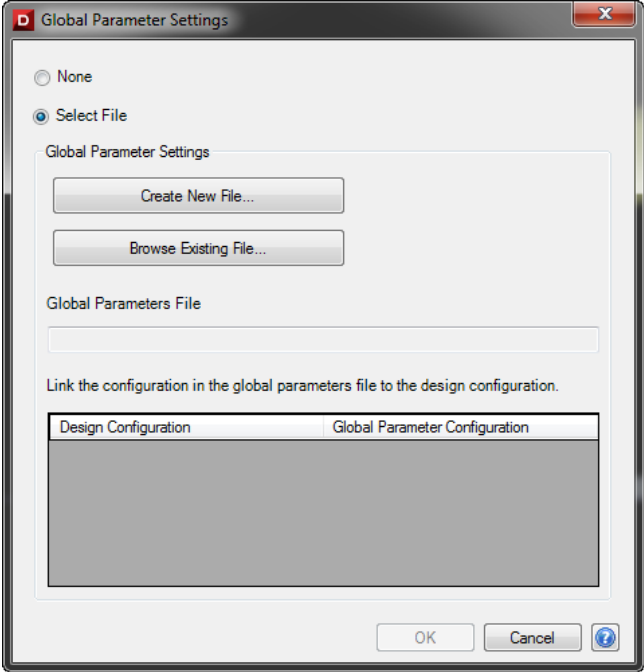
If you are an existing user and have already activated the license on your PC with the previous version of the application, you can run the newer version of the application without re-activating the license.

For more information, go to [gettingstarted.geomagic.com](#), select the Geomagic Design product, then click Licensing.

## PART WORKSPACES

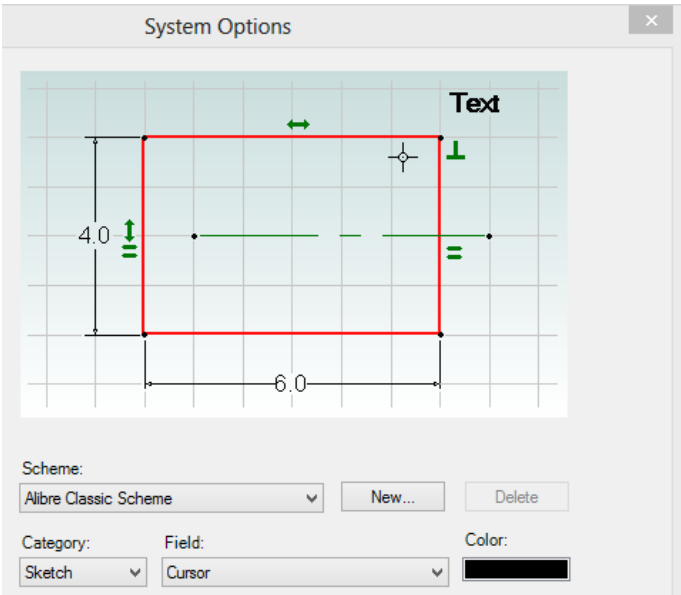
### Global Parameters

Global parameters can now be created from within the [Global Parameter Settings](#) dialog for a better user workflow.



### Cursor Color

The ability to change the color of the cursor has been included in the [Color Scheme](#).



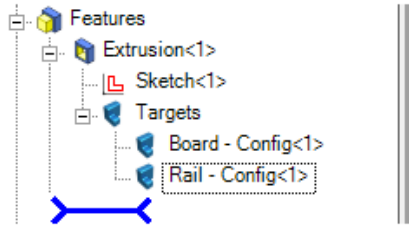
### Importing CAD Formats

[SolidWORKS 2015](#) and [Inventor 2016](#) files can now be imported into Geomagic Design.

# ASSEMBLY WORKSPACES

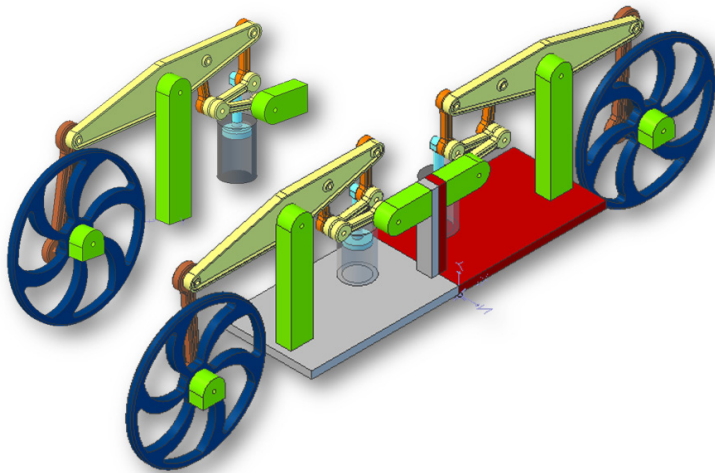
## Assembly Features

The target instances in an Assembly Feature are listed under the feature in the Design Explorer. This provides quick information to the user about the assembly feature and highlights the appropriate part instance in case of any failures.



## Mirroring in Assembly

Existing parts or subassemblies can now be used to create a **Mirror Pattern** in an Assembly. The new components can be a copy or an other-handed part of the seed components.



# DRAWINGS

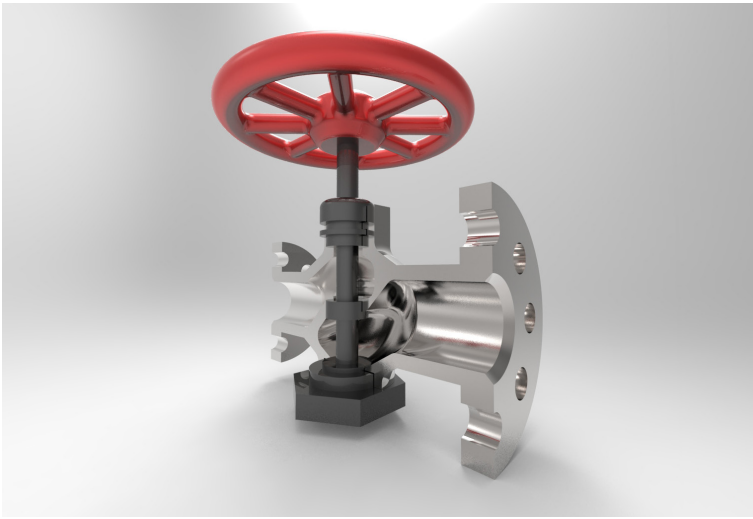
## Importing and Exporting DWG/DXF

**DWG/DXF 2010** and **2013** files can now be imported into and exported from Geomagic Design.

# LIVE LINKING OF MODEL TO KEYSHOT FOR 3D SYSTEMS

## Transferring Models to KeyShot for 3D Systems

You can now directly transfer parts and assemblies to [KeyShot for 3D Systems](#) application and render a model in it. After the model is first rendered in KeyShot for 3D Systems, updates made to the model in Geomagic Design can also be transferred to the rendered model.



## API ENHANCEMENTS

### Sweep

The [Sweep](#) function has been improved to accept a 3D Sketch as an input for the sweep path.

## PDF PUBLISHING

### Publishing 2D Drawings

Since PDFCreator had many issues with it and installed adware/malware along with it, it has been replaced with [PDFill](#). To use 2D PDF publishing, install [PDFill Writer](#) from [www.pdfill.com](http://www.pdfill.com).

## 4 FIXED BUGS

This section lists issues that have been resolved since Geomagic Design v2015.0.1:

- GD-2675 Forum from the Help menu does not launch in the system's default web browser
- GD-2638 Exception when right clicking on a face as the assembly is loading
- GD-2637 Editing only the name in assembly pattern dialog does not enable the OK button
- GD-2619 Constraints for assembly reference geometry are not maintained after regenerating the assembly
- GD-2611 Exception during Save All As under certain circumstances
- GD-2607 Model units are not retained when rendering a model to KeyShot
- GD-2602 Assembly interference global check incorrectly reports no errors if part geometry is selected
- GD-2587 Measurement tool does not work properly when one of the selected entity is an assembly boolean face
- GD-2567 Spurious surfaces seen when importing certain STEP files
- GD-2529 Constraints are not evaluated in assemblies under certain situations
- GD-2525 Geomagic Design crashes when loading a drawing with deleted configuration
- GD-2521 Cannot create drawing view under certain circumstances
- GD-2515 Cuts do not display in the model under certain situations
- GD-2476 Status bar text is not seen when using high contrast black theme in Windows
- GD-2447 Export command is missing from the File menu in the BOM workspace
- GD-2445 Mirroring a sketch does not work inside a drawing view
- GD-2421, GD-2419 Localization issues in the Dimension Properties dialog and in the Hole dialog
- GD-2415 Loft between two faces that have a hole in them crashes Geomagic Design
- GD-2359 Cuts do not display in the model under certain situations
- GD-2334 Exporting an assembly to SolidWorks results in incorrectly named parts when using the part data Numbers field
- GD-2304 Help page not correct for the Insert Symbols dialog
- GD-2292 Display artifacts seen in some situations
- GD-2222 Part cannot be saved via API if it has external threads
- GD-2194 Exception when trying to overwrite a custom symbol file
- GD-2188 Callouts and notes disappear when changing from Standard to Shaded view under some circumstances
- GD-2184 Delay in loading the assembly if it has an assembly feature and a suppressed feature in any constituent
- GD-2142 Status bar dimension is incorrect when displayed using fractions
- GD-1995 Geomagic Design hangs when computing certain fillets
- GD-1918 Loft dialog cannot be resized
- GD-1856 Sketches got corrupt when creating constraints and dimensions under certain circumstances
- GD-1553 Physical properties are not correct in some situations
- GD-1398 The expanded/collapsed status of the constraints list is not retained after the file is reopened.
- GD-1340 Projected edges are missing from a drawing view of an ellipsoidal shape
- GD-1318 Incorrect preview for the fillet feature in some situations
- GD-1293 BOM does not recognize all parts in the assembly
- GD-1214 Working folder is not set correctly when opening Geomagic Design files from the Windows Explorer
- GD-1161 Mesh Boolean and Convert Mesh to Solid commands are not available unless there are meshes in the current design, when editing a part in the context of an assembly
- GD-513 Fixed issues with the Advanced Selector
- GD-2308 Annotation for the section view flips direction when the drawing is reopened





3D Systems, Inc.  
333 Three D Systems Circle | Rock Hill, SC | 29730  
[www.3dsystems.com](http://www.3dsystems.com)

©2015 3D Systems, Inc. All rights reserved.