



Master the new world of digital dentistry with Geomagic's proven, open architecture dental CAD/CAM software.



And deliver more natural restorations in less time
for a better patient experience.

geomagic[®]

www.geomagic.com/dental

geomagic

Geomagic Digital Dentistry

Dental CAD/CAM opens up a new world of possibilities – providing improved communication between the dental office and lab, aesthetically pleasing results, less chair time and better care for the patient. At the heart of it all is the software that enables the design and creation of precise restorations and serves as the critical connection in the imaging and production workflow.

Based on more than a decade of research and development performed in close collaboration with leading dental companies in general dentistry, dental implants and orthodontics, Geomagic Piano™ software provides a proven, world-class solution for dental reconstruction – supporting dental chair-side and laboratory systems with the accuracy and automation needed to meet the most challenging requirements.



Seamlessly Convert Scan Data into Accurate 3D Models

As scanning technology continues to evolve, Geomagic Piano is uniquely poised to integrate with all types of scanners. Geomagic Piano accurately reconstructs scan data of teeth, maxillary and mandibular arches, and jaw structure to facilitate the precise design of crowns, bridges, custom implant abutments and orthodontic appliances.

Desktop scanners can be used to scan stone models made from traditional impressions. Intra-oral and cone beam CT scanners create digital impressions of the patient's teeth and bone structure which can be directly imported into Geomagic Piano.



Achieve a New Level of Artistry and Design

Geomagic Piano provides a variety of advanced digital tools that mirror the traditional dental restoration workflow while enabling dental technicians to apply their expertise and artistry with greater precision and flexibility.

Copings, bridge frameworks and dental restorations can be automatically created in a few simple steps. A virtual wax-knife tool allows further refinement to achieve a perfect fit to the margin line of the prepared tooth and to the adjacent and antagonist teeth.

Custom implant abutments can be designed using either offset or reduction methods to provide the perfect fit and angle between the implant and final restoration.





Produce Precise, Aesthetically Pleasing Restorations

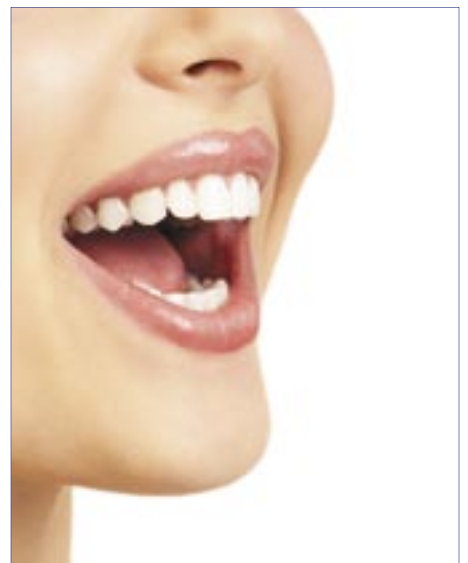
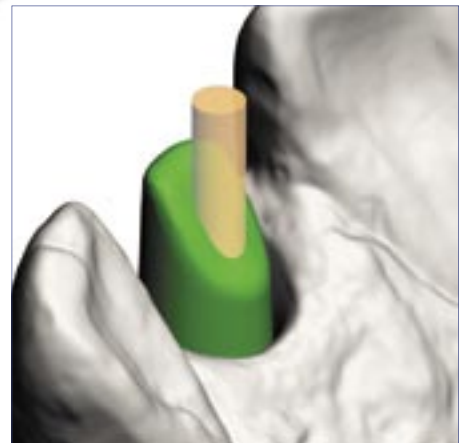
Geomagic Piano enables users to combine the latest computerized production equipment with highly advanced materials that simply can not be incorporated into conventional techniques. Our software supports a full range of output devices including CAM software, CNC milling equipment and rapid prototyping machines. We provide the only solution compatible with both Polygon (STL) and Surface (IGES) output data formats.

Customizable to Meet Various Requirements

Featuring a built-in development platform, Geomagic Piano can be customized to create best-in-class turnkey CAD/CAM solutions. By leveraging Geomagic Piano technology and the Geomagic Agile Platform, dental equipment manufacturers can create a development framework that expedites time-to-market and permits the integration of legacy systems with leading-edge technology. Geomagic Piano's open platform enables immediate interoperability with imaging and manufacturing systems to provide a standardized software interface designed specifically for the dental restoration workflow.

Setting New Standards in Dental Patient Care

Geomagic software seamlessly integrates the entire workflow; from scanning to digital restoration, from design to production. Our team of experts are accessible every step of the way. Partnering with us means leveraging our expertise in dental CAD/CAM to achieve the ultimate in quality dental practices and patient care.





To learn more about Geomagic solutions for the dental industry, please visit www.geomagic.com/dental.

Worldwide Offices

Geomagic Corporate Headquarters

PO Box 12219
Research Triangle Park, NC 27709 USA
+1 800 691 1839
+1 919 474 0122

Americas

Chicago
Denver
Detroit
Los Angeles

Europe

Amsterdam
Budapest
Cologne
London
Munich

Asia

Shanghai
Singapore
Tokyo